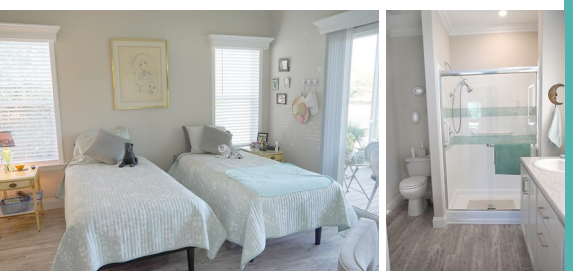


14 North Warner Dr.

For
SALE

Home size: 26'8" x 42'/44'
Square Feet: 1,387
Porch/Extra S/F: 208
Year: 2020
Bedrooms: 2
Bathrooms: 2
Furnished: No
Flooring: Laminate Wood plank
Laundry: In house
Applianc/Equip: Refridge., range, dishwasher
Lot Desc: Interior (Perimeter)
Lot Size: 7,156 S/F
Irrigation Well: Yes
Assoc Fee (Optional): \$10.00/yr
Monthly Lot Rent: \$724.00
(includes cable, garbage, & amenities)

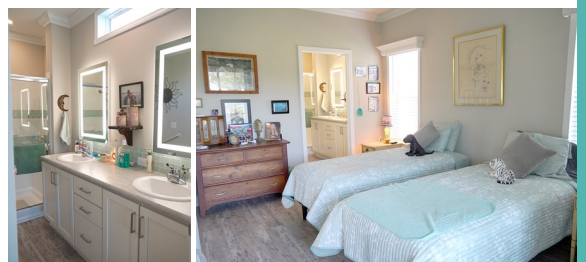


Pinelake Village

A 55+ Manufactured Housing Community



- Built by Palm Harbor!
- 9' flat ceilings
- Laminate wood plank flooring
- Open/eat-in kitchen with stainless steel appliances
- Beautiful views of Warner Creek from the kitchen, master bedroom and large screened in porch
- 2 large porches. Complete with the Summer Cove package adding beautiful curb appeal



Please visit our website for additional info & pictures www.PinelakeVillage.com

Please call to arrange a private viewing **Vicki Mattucci, Sales Agent** 772-201-2685 cell or 772-334-1414 office



